

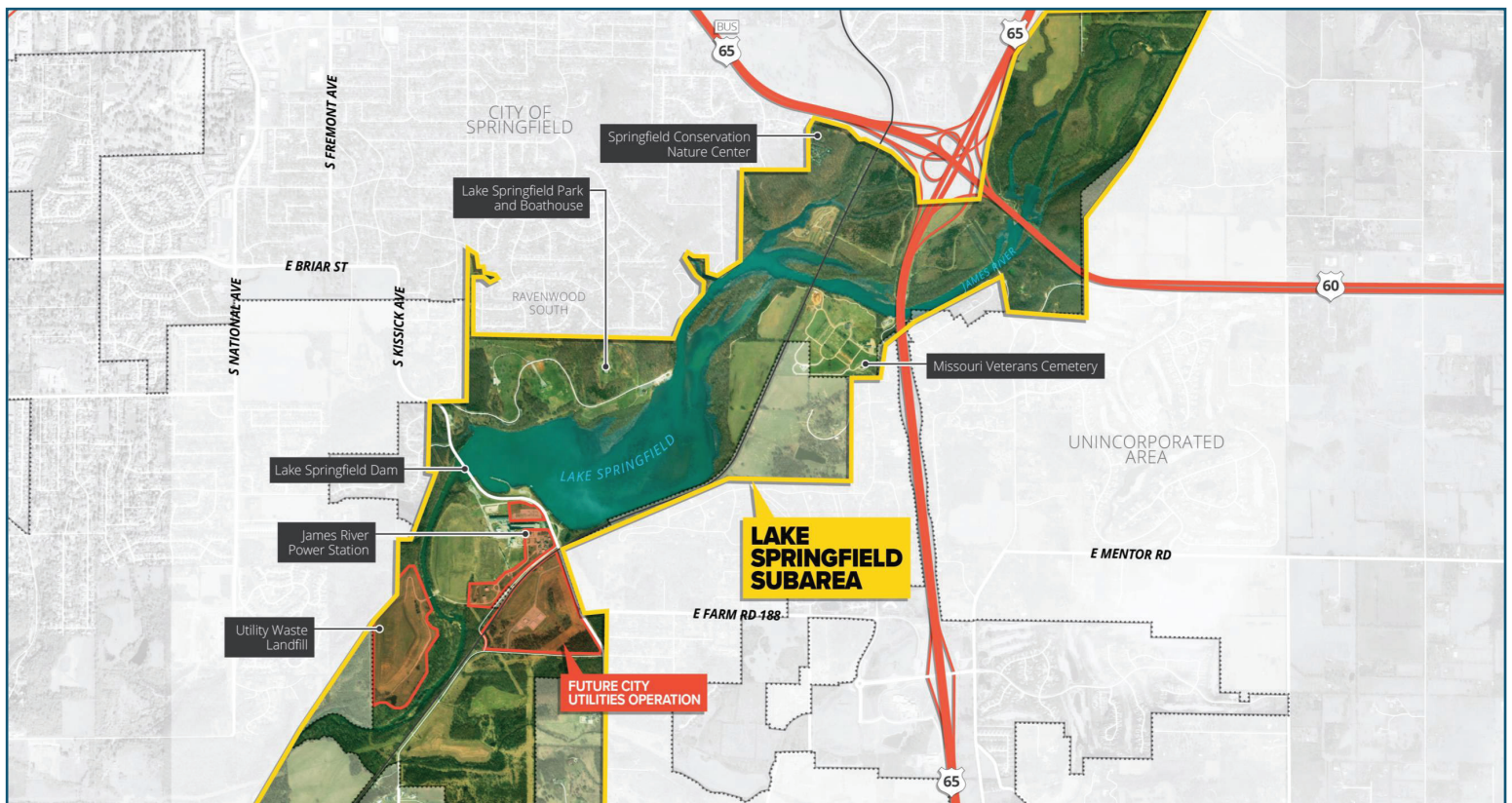


# PROJECT SUMMARY FALL 2023

By Fall of 2023, more than 1,000 people have participated in visioning sessions about the future of Lake Springfield. This input is vital to the creation of the proposed plan, created by a partnership between the City of Springfield, City Utilities and a consulting team led by Crawford, Murphy & Tilly. The plan is funded by a substantial grant from the federal government's Economic Development Administration.

Nestled on Springfield's southeast side, Lake Springfield a key natural asset to the community and surrounding region. While it currently offers a variety of recreational amenities, there is significant opportunity to enhance the area into a recreational focal point of the region. The decommissioning of the James River Power Station presents a unique opportunity for adaptive reuse of the facility, repurposing part of the larger site for active recreation and making a lasting impact on the James River Basin.

The proposed Plan includes adaptive reuse planning for the decommissioned Power Station and a Plan for the Lake Springfield area encompassing approximately 1,000 acres of publicly owned land.



The as-of yet unfunded plan, projected to be complete by summer 2024, will be a catalyst for new economic development and recreational opportunities. Components will include:

- ▶ recreational expansion opportunities
- ▶ adaptive reuse planning for the decommissioned power station
- ▶ hydrological studies
- ▶ water quality and ecological preservation planning
- ▶ economic development and workforce development opportunities
- ▶ transportation, access and wayfinding
- ▶ land use recommendations.

## BACKGROUND

Through an \$800,000 grant from the U.S. Department of Commerce's Economic Development Administration (EDA), and \$200,000 from the Hatch Foundation, City Utilities of Springfield and the City of Springfield's Environmental Services Department is funding the development of a master plan for the area, including and surrounding the former coal-powered plant (James River Power Station). Redevelopment will complement Lake Springfield Park and Boathouse, which are jointly operated by CU and the Springfield-Greene County Park Board.

## NEW RENDERING



For more information visit [LakeSGFPlan.com](https://LakeSGFPlan.com)